

Inside the box you will find:

A: 4 x M6 bolts +nuts

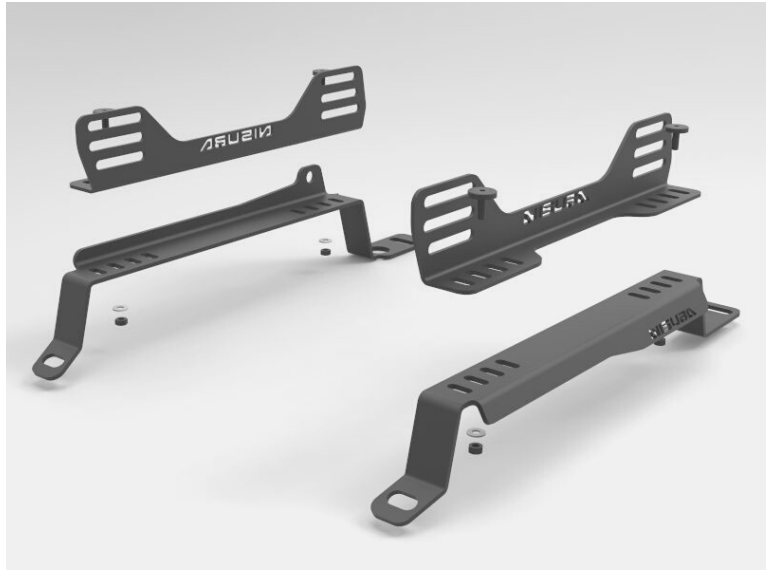
B: 4 x M6 washers

C: 1 x M10 hexagonal bolt + washers + nut

D: 4 x Nisuba washers

E: 2 x Specific seat brackets NISSAN 350Z

F: 2 x Floor brackets



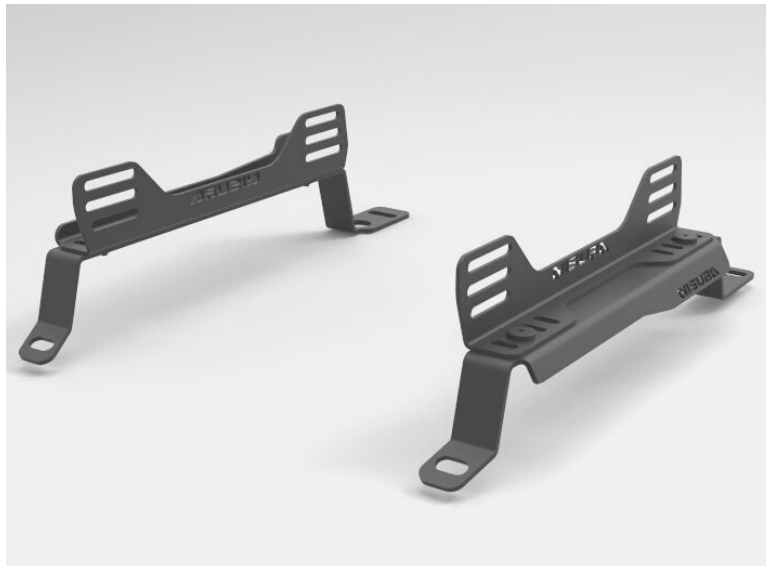
NISSAN 350Z SEAT BRACKETS MOUNTING INSTRUCTIONS

1

Join the floor brackets to the seat brackets using parts A, B and D.

IMPORTANT

The 4 pre-dilled holes must align up, to achieve the best stability. See example picture. For the seat adjustment use the pre-cut out slots.



2

Bolt the stock seat belt anchor to the seat belt anchor mounting point using part C.

3

Don't tighten to much so when it's in place you can adjust it better.

4

Bolt the seat between the two seat brackets and finally tighten all the nuts.

